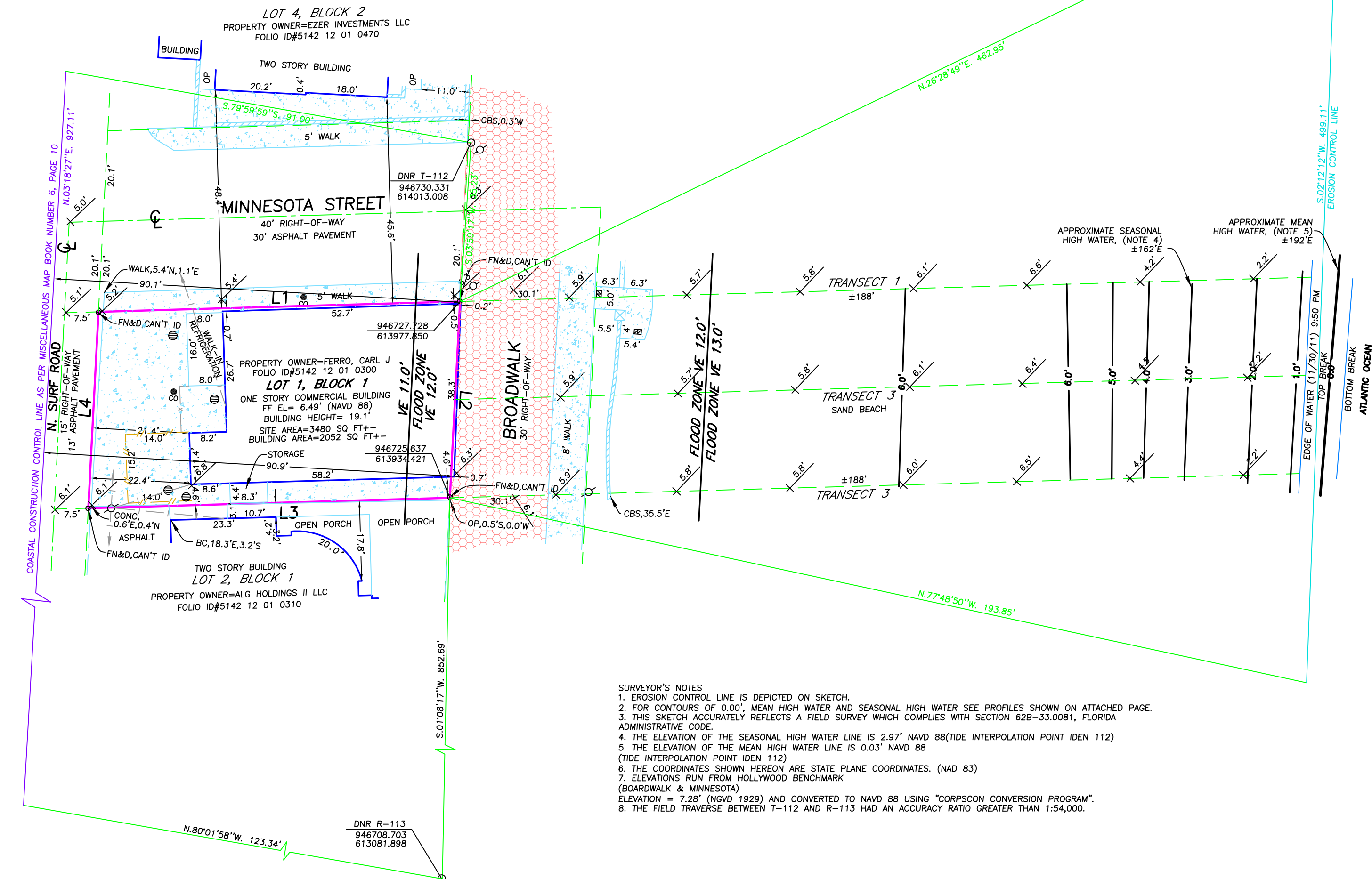


LOT 1, BLOCK 1, "HOLLYWOOD BEACH, FIRST ADDITION", ACCORDING TO THE PLAT THEREOF, AS RECORDED IN PLAT BOOK 1, PAGE 31, OF THE PUBLIC RECORDS OF BROWARD COUNTY, FLORIDA.

PROPERTY ADDRESS
1214 N BROADWALK
HOLLYWOOD, FL 33019

FLOOD ZONE VE 11.0'/12.0'
MAP DATE 07/21/95
MAP NUMBER 125113 0317G

§ 19. BWK-25-HD-R Surf Road – Broadwalk Setback Diagram

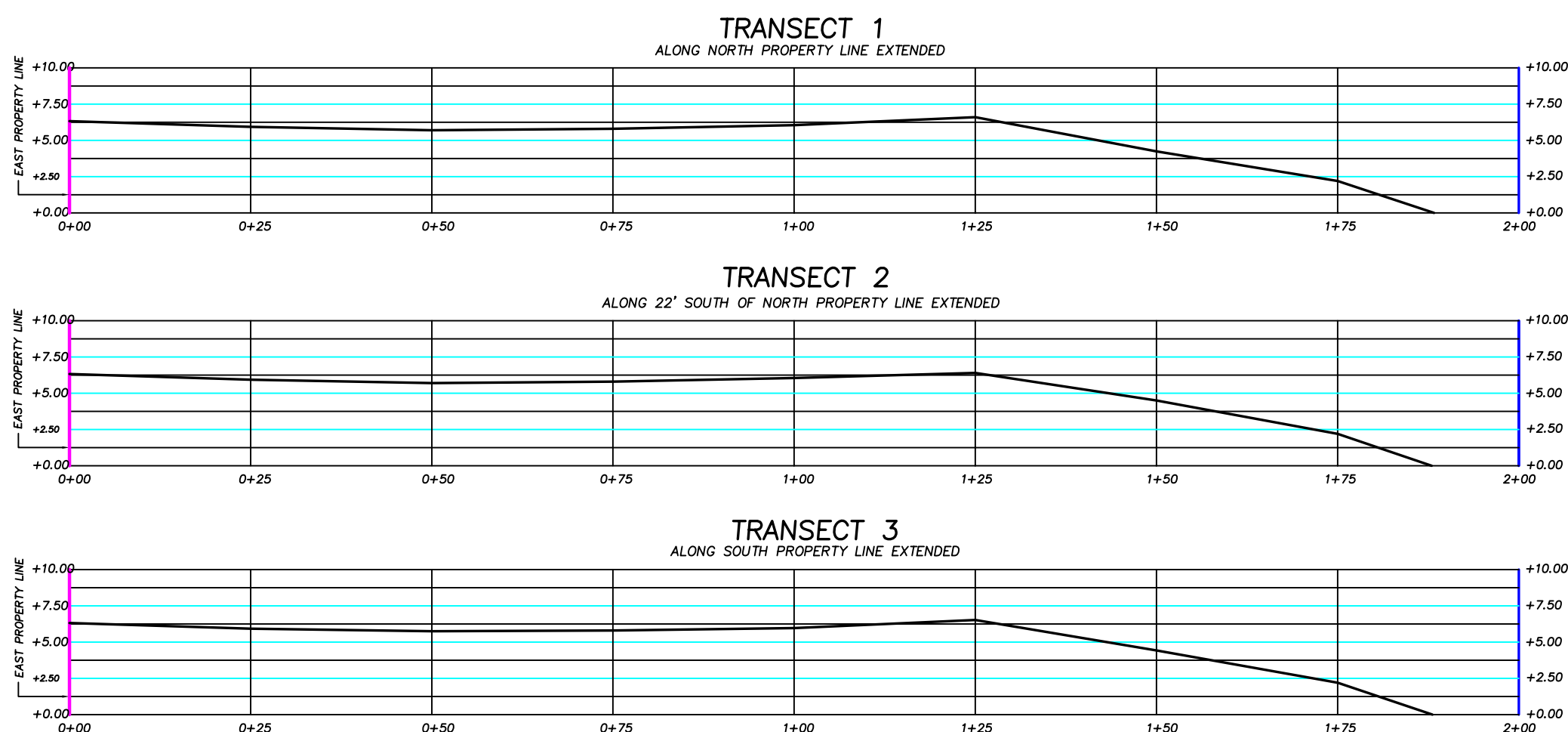


SURVEYOR'S NOTES

1. EROSION CONTROL LINE IS DEPICTED ON SKETCH.
2. FOR CONTOURS OF 0.00', MEAN HIGH WATER AND SEASONAL HIGH WATER SEE PROFILES SHOWN ON ATTACHED PAGE.
3. THIS SKETCH ACCURATELY REFLECTS A FIELD SURVEY WHICH COMPLIES WITH SECTION 62B-33.0081, FLORIDA ADMINISTRATIVE CODE.
4. THE ELEVATION OF THE SEASONAL HIGH WATER LINE IS 2.97' NAVD 88 (TIDE INTERPOLATION POINT IDEN 112)
5. THE ELEVATION OF THE MEAN HIGH WATER LINE IS 0.03' NAVD 88 (TIDE INTERPOLATION POINT IDEN 112)
6. THE COORDINATES SHOWN HEREON ARE STATE PLANE COORDINATES. (NAD 83)
7. ELEVATIONS RUN FROM HOLLYWOOD BENCHMARK

(BOARDWALK & MINNESOTA)
ELEVATION = 7.28' (NAVD 1929) AND CONVERTED TO NAVD 88 USING "CORPSCON CONVERSION PROGRAM".

8. THE FIELD TRAVERSE BETWEEN T-112 AND R-113 HAD AN ACCURACY RATIO GREATER THAN 1:54,000.



LOCATION SKETCH N.T.S.
















SURVEYOR'S NOTES:

1. BASIS OF BEARINGS AS INDICATED ON SKETCH.
2. LEGAL DESCRIPTION PROVIDED BY CLIENT.
3. THE LANDS SHOWN HEREON WERE NOT ABSTRACTED BY THIS OFFICE FOR EASEMENTS, RIGHT-OF-WAYS, OWNERSHIP OR OTHER INSTRUMENTS OF RECORD.
4. UNDERGROUND OR INTERIOR PORTIONS OF FOOTINGS, FOUNDATIONS, WALLS OR OTHER NON-VISIBLE IMPROVEMENTS WERE NOT LOCATED.
5. ELEVATIONS ARE BASED ON THE NATIONAL GEODETIC VERTICAL DATUM OF 1929 UNLESS OTHERWISE SHOWN.
6. FENCE TIES ARE TO THE CENTER-LINE OF FENCE. WALL TIES ARE TO THE FACE OF WALL.
7. IN SOME INSTANCES GRAPHIC REPRESENTATIONS HAVE BEEN EXAGGERATED TO MORE CLEARLY ILLUSTRATE THE CONTROL THE LOCATION OF THE IMPROVEMENTS OVER SCALED POSITIONS.
8. DIMENSIONS AND DIRECTIONS SHOWN HEREON ARE IN SUBSTANTIAL AGREEMENT WITH RECORD VALUES UNLESS OTHERWISE NOTED.
9. PARTY WALLS ARE CENTERED ON PROPERTY LINE AND ARE 0.7' WIDE UNLESS OTHERWISE NOTED.
10. EXISTING CORNERS FOUND OFF WITNESS PROPERTY CORNERS
11. OBSTRUCTED CORNERS ARE WITNESSED BY IMPROVEMENTS.
12. THE PURPORT WAS NOT TO CANCEL WRITTEN OR UNWRITTEN EASEMENTS OR RIGHTS-OF-WAY, OTHER THAN THOSE SHOWN HEREON.
13. DNR MONUMENT DESTROYED PREVIOUSLY LOCATED ON 10/9/92.

ABBREVIATIONS


BC	BUILDING CORNER
BW	BACK OF WALK
M	CALCULATED
ME	MEASURED
N.T.S.	NOT TO SCALE
OP	OPEN PORCH
ORB	OFFICIAL RECORDS BOOK
PI	POINT OF CURVATURE
POB	POINT OF BEGINNING
POC	POINT OF COMMENCEMENT
PRC	POINT
PRM	POINT OF REVERSE CURVE
PRM	PERMANENT REFERENCE MONUMENT
E/F	EASEMENT
EP	EDGE OF FENCE
EP	EDGE OF PAVEMENT
F/W	FENCE OF WATER
F/C	FENCE CORNER
F/L	FENCE LINE
FI	FOUND IRON PIPE
FI	FOUND IRON ROD
FIN	FOUND NAIL
N&D	FOUND NAIL & DISC
FL&L	FLORIDA POWER AND LIGHT
REF	RECORD
RD	RADIUS
SN&D	SET NAIL & DISC # 5495
S&D	SET DISC # 5495
SP&C	SET 1/2" PIN & CAP # 5495

LEGEND

	CABLE JUNCTION BOX
	CATCH BASIN
	CLEAN OUT
	CONTROL VALVE
	ELECTRIC SERVICE
	FIRE HYDRANT
	FP&L PAD
	GUY ANCHOR
	MANHOLE
	POOL EQUIPMENT
	POWER/LIGHT POLE
	SPRINKLER SYSTEM
	WATER METER
	WATER VALVE
	WELL

BRICK PAVERS
CENTERLINE
CONCRETE/CHAT
CONCRETE WALL
ELEVATION
METAL FENCE
OVERHEAD WIRES
WOOD DECK/DOCK
WOOD FENCE




PAUL J STOWELL
PROFESSIONAL LAND SURVEYOR
FLORIDA CERTIFICATION NO. 5241
ATLANTIC COAST SURVEYING, INC.
6129 STIRLING RD SUITE 2 DAVIE, FLORIDA 33314
OFFICE: 954.587.2100 FAX: 954.587.5418

NUMBER	DIRECTION	DISTANCE
LINE 1	N.85°19'45"E.	80.00'
LINE 2	S.00°04'37"E.	43.50'
LINE 3	S.85°19'45"W.	80.00'
LINE 4	N.00°04'37"W.	43.50'

